



THE COLLEGE OF  
OPTOMETRISTS

# Stage Two

Overarching case scenario 82

**AGE AND GENDER** 68 years old, male

**ETHNIC BACKGROUND** Caucasian

**OCCUPATION AND HOBBIES** Mobile car valeting business owner, returned to work as has not been able to find reliable workers. Driver – car and small van.

**PRESENTING SYMPTOMS AND HISTORY** Woke up with double vision. Diagonal, both at distance and near. With and without near specs. Mild pain around right temple area. If closes one eye, the double vision disappears. Needs to be able to drive to continue working.

**GENERAL HEALTH AND MEDICATION** Diabetic, Type II for 5 years, takes Metformin tablets. Has not had a health check for over a year – “too busy”. Has not had a sugar level check recently. Attended the diabetic eye screening appointment two years ago, when everything was fine. Is a smoker.

**PRESENT Rx, CENTRATION AND ACUITIES** RE +2.25DS N5 @ 35cm  
LE +2.25DS N5 @ 35cm  
CR39 ½ eyes, OC 68mm “ready readers” since last proper pair got broken.  
**PD/NCD** 63/60mm

**VISION** RE 6/7.5 , N36 LE 6/6 +1 , N24

**PINHOLE VISION** RE 6/6 LE 6/5

**REFRACTION** RE +0.50/-0.25 x 90 add +2.25 / +1.75  
LE +0.25/-0.50 x 75 add +2.25 / +1.75

**VA Distance** RE 6/6, LE 6/5, Binoc 6/6  
**Near** RE N6 / N6 LE N5 / N5 Binoc N5 / N5 @ 40 / 60cm

**ACCOMMODATION** RE 0.5D , LE 1D, Binoc 1D

**BINOCULAR STATUS** Cover Test DV: RE 15<sup>A</sup>Exotropia and hypotropia  
Cover Test NV: RE 18<sup>A</sup>Exotropia and hypotropia

**MOTILITY** RE Ptosis, diagonal double vision in all positions of gaze and angle of deviation varies. There is mild pain reported in most extreme positions.

**CONVERGENCE** Not measured

**PUPIL REACTIONS** Pupils are responsive to light and accommodation equally in both eyes.

**FUNDUS EXAMINATION** see attached photo

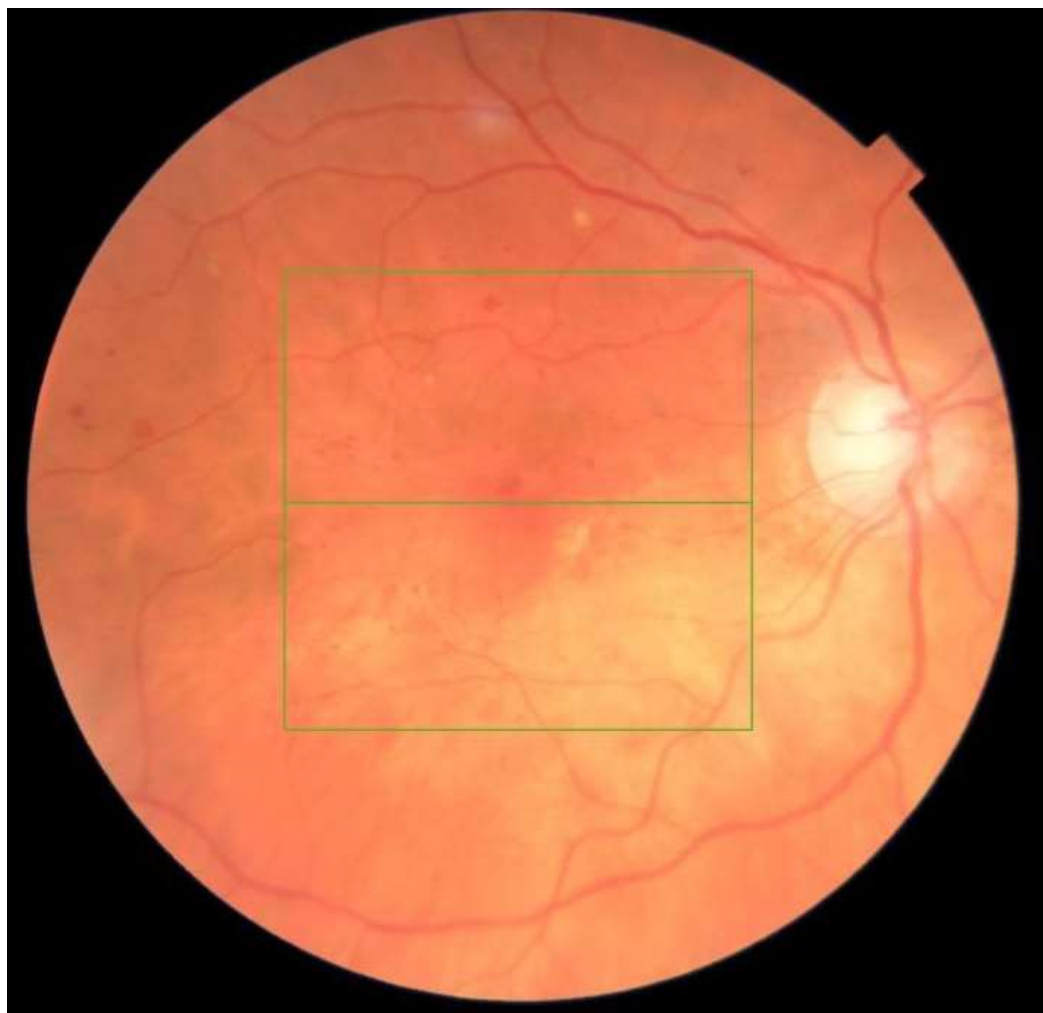
**FIELDS** Not assessed

**IOP** RE 16,16, 15 mmHg LE 16, 16, 16 mmHg, Pulsair @ 9.15am

**EXTERNAL EYE EXAMINATION** see attached photo

**KERATOMETRY** Not measured  
**COLOUR VISION** Not measured

# Fundus image RE (LE is similar)



# External eye image

